

UPPER RIDEAU LAKE



Upper Rideau Lake Association

Box 67, Westport, Ontario
K0G 1X0 | www.urla.ca

Watch Your Wake — Excessive wakes can contribute to shoreline erosion, property damage and endanger swimmers, canoeists and kayakers.



Shoreline Makeover — Natural shorelines, rich in native plants act as a filtering system keeping nutrients out of our lake and also protect shorelines from erosion. Avoid the use of fertilizers, cleaners and other products on or near the water that contain nitrogen or phosphorus. Get your plants each year from URLA's plant program. Watch for the advertisements in our fall newsletter.

Blue-green Algae? — Report suspected blooms to the MOECC Spills Action Centre at 1-800-268-6060. Take a picture of the suspect bloom too

Too much Algae and Aquatic Vegetation? — Reducing the nutrients that leach into our lake minimizes the conditions that produce algae. You can help by planting a buffer zone of 10 meters of native plants along your shoreline. Roots of living plants intercept and absorb nitrogen and phosphorus.

Changing your Dock, Altering your Shoreline or Cutting Aquatic Vegetation? Call Parks Canada at 613-283-7199 (205) for instructions on making An Application to Perform Work in the Water along the shores of the Rideau Canal. And remember to remove from the water any weeds that you cut!



TO JOIN URLA PLEASE GO TO:
https://foca.on.ca/product/upper_rideau_lake_association/

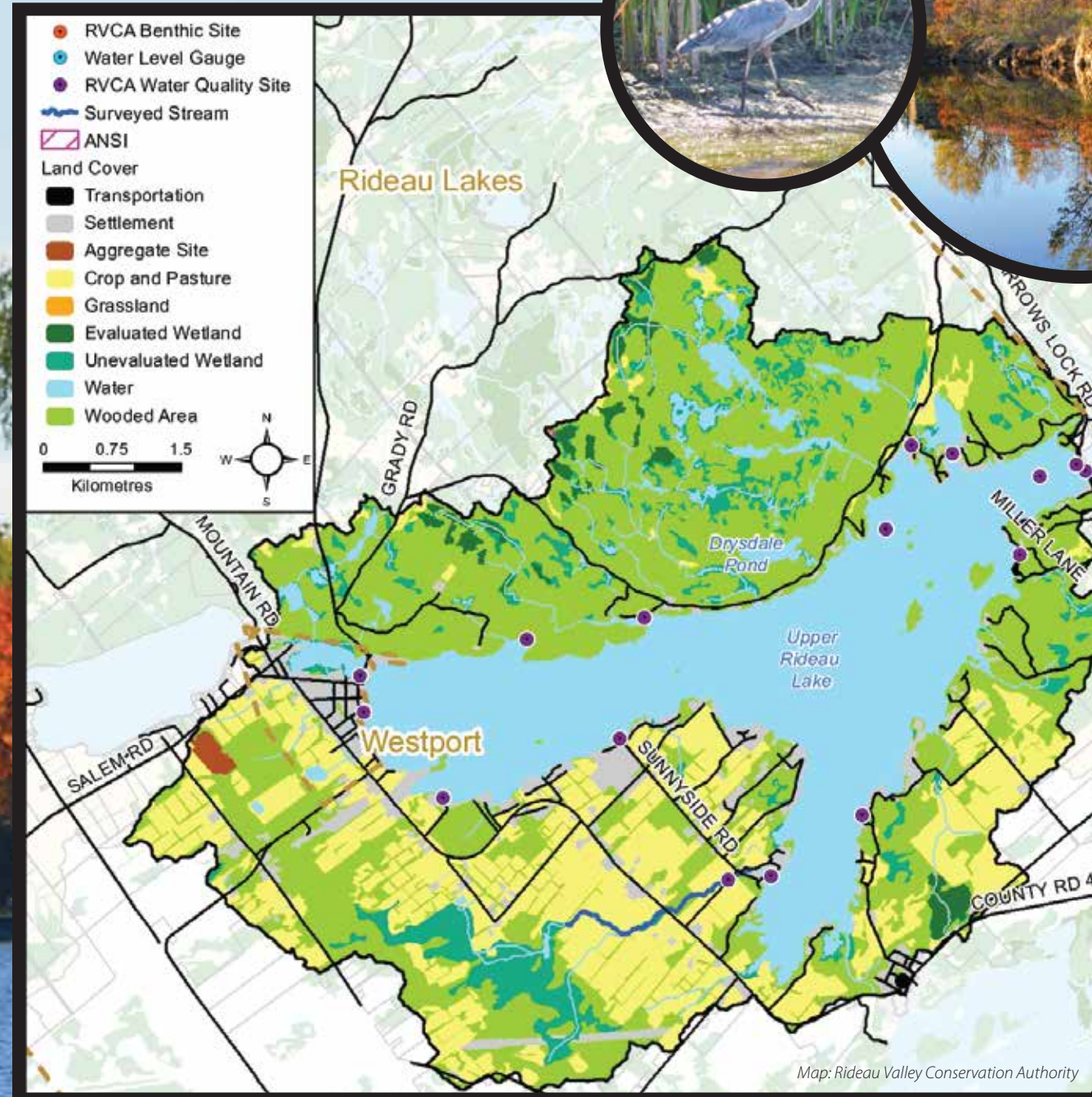
Photos by Jayne MacDonald

Don't Light the Night! — During a moonless night at the cottage you should be able to see over 3,000 stars and the Milky Way while city dwellers are lucky to see 100. Too much light has a negative effect on wildlife as well. To enjoy the night sky, use outdoor lights only when necessary, try timers, choose glare-free, low-wattage bulbs aimed down and away from the water.



Citizen Water Watch App

To contribute to research activities, report algae and aquatic plant observations with a photo and a description. Download the app for free from the Google Play store.



Be Septic Smart

- Do:**
- Keep a drawing of your system for reference and a record of system maintenance
 - Divert surface water away from your leaching bed
 - Pump out your tank every three to five years
 - Repair leaky plumbing fixtures

- Don't:**
- Flush chemicals, cigarette butts or sanitary products
 - Use a garburator
 - Plant trees or shrubs too close to the system or leaching bed
 - Enter a tank, gases and lack of oxygen can be fatal
 - Connect rain gutters or leave interior faucets on during cold spells
 - Drive over your system or leaching bed

FUNDED BY: Rideau Valley Rural Clean Water Program
To Learn about available funding, visit www.rvca.ca

